

Cow Lesson

a lesson all about VALUE...

SUPPLIES NEEDED:

Brushes: Round #10,
Isabay #6, and Round #8

Paint Colors:

Yellows: Aureolin, Q. Gold, Raw
Umber

Reds: Perm. Rose, Perylene Violet

Blues: Cerulean, Cobalt, UMBlue

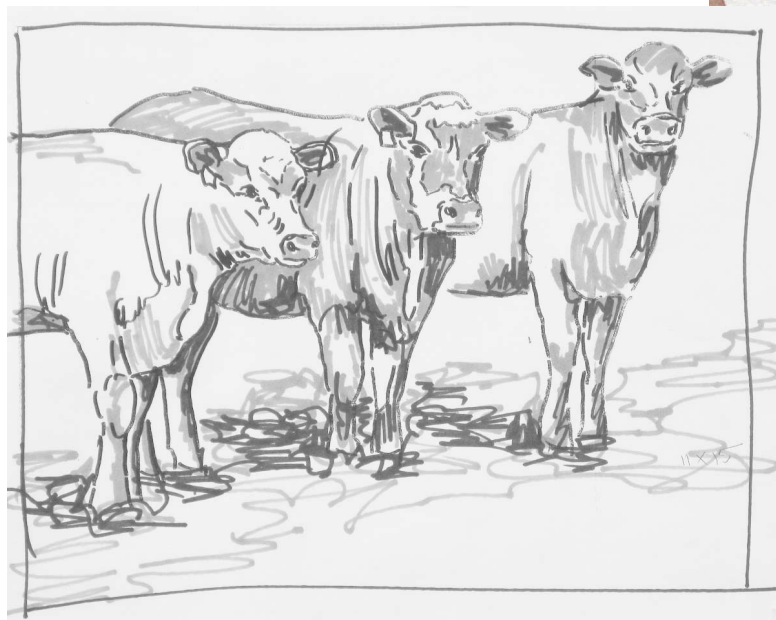
Whites: Coastal Fog, Tit. White

Paper: 300# or 140# Arches Wa-
tercolor



BEFORE YOU PAINT

1. Play with tracing paper to position the 3 cows in a design that incorporates good shapes, negative and positive spaces. Determine dark, mid and light values and make a value sketch, noting your light source, and placement of darks and lights.
2. Check to see if your composition is working. Where is your center of interest?
3. Test on scrap paper the colors you want to use. The colors on the right were made with



Coastal Fog and Titanium White, which I later decided not to use in the painting.

4. Trace your drawing onto your watercolor paper.

Paint the White Cow

Paint Colors: for Layer #1

Yellows: Aureolin Yellow

Reds: Q. Red, Perm. Rose,

Optional Whites: Coastal Fog, Tit.
White

Layer #1. On dry paper, brush on a light mixture of A. Yellow and water, leaving some whites.

Add small amounts of Perm. Rose and Q. Red to the yellows.

This action defines your light and dark areas.

Paint Colors: for Layer #2 and #3

Yellows: Aureolin Yellow

Reds: Perm. Rose, Q. Red

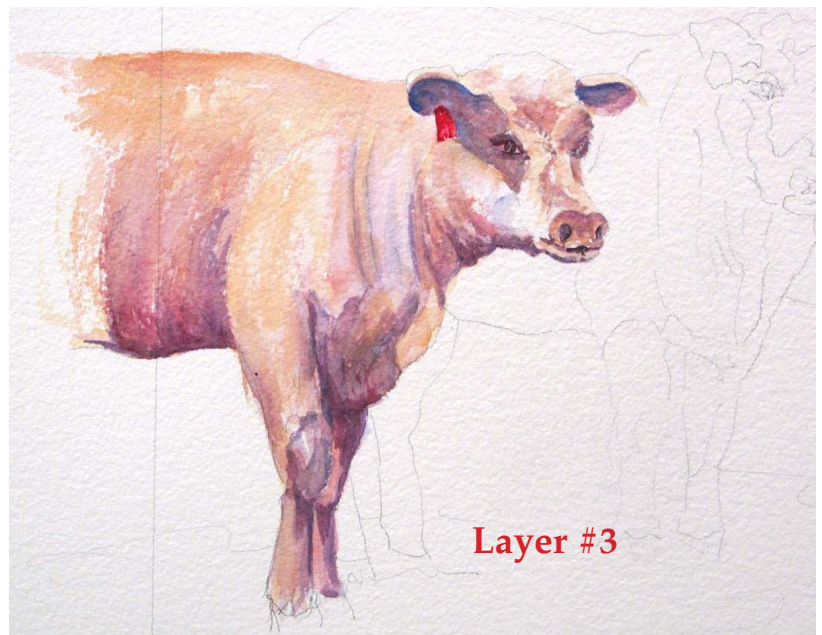
Blues: Cobalt

Layer #2 & 3. 3. Come back and gradually strengthen the color until you build it up to the intensity you desire... Drop in some darks on the shadow side, i.e. violets, blues.

Paint the eyes with a rigger, or any brush with a good point, and pure perylene maroon.

Paint the ear tag with Q. Red and Perylene Violet for the shadow.

If you leave the background white, go back and clean up any ragged edges with a Fritch Scrubber brush.



Paint the Red/Brown Cow

Paint Colors: for Layer #1

Yellows: Raw Umber

Reds: B. Sienna, Perm. Rose, Perylene V.

Optional Whites: Coastal Fog, Tit. White

Layer #1. I painted on a dry background, Mix up some raw umber, permanent rose and burnt sienna. Paint the cow's light areas with more raw umber than burnt sienna. Paint the dark areas with more burnt sienna than raw umber.

Add some Perylene Violet in darker areas.

Paint Colors: for Layer #2 and #3

Yellows: Raw Umber, Q. Gold

Reds: B. Sienna, Perm. Rose, Perylene V.

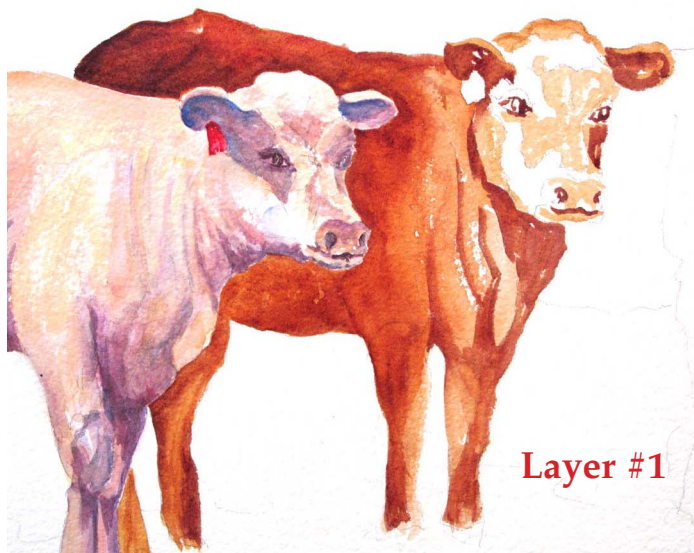
Blues: ultramarine blue

Layer #2. Increase the intensity of the colors around the head of the white cow to push him forward. You can add some Q. Gold to your mix to pump up the lighter areas of the cow.

Layer #3. Model the face gradually darkening the browns. I did not leave the whites stark white on this cow's face because I wanted to push the viewer over to the white cow's face.

Add some UM Blue to the darks to intensify them. You can also add Perylene Violet to darken as well.

Paint the ear tag.



Paint the Purple Cow

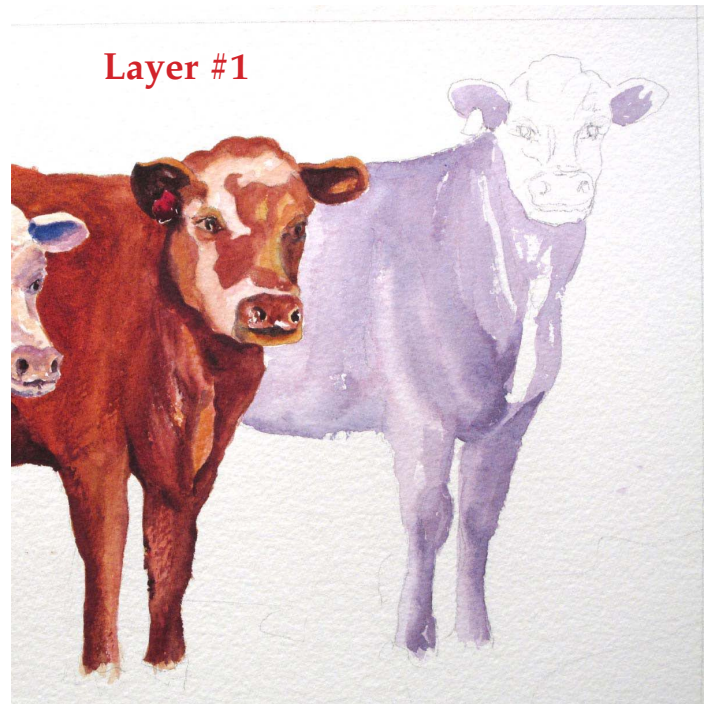
Paint Colors: for Layer #1

Reds: Perm. Rose

Blues: Cobalt Blue

Layer #1. Paint the cow on a dry background. Mix up a Blue-Violet with Cobalt Blue and Perm. Rose. Water it down a lot.

Use more Perm. Rose for the light areas, and more cobalt blue for the dark areas when making your blue-violet mixture.



Layer #1



Layer #2

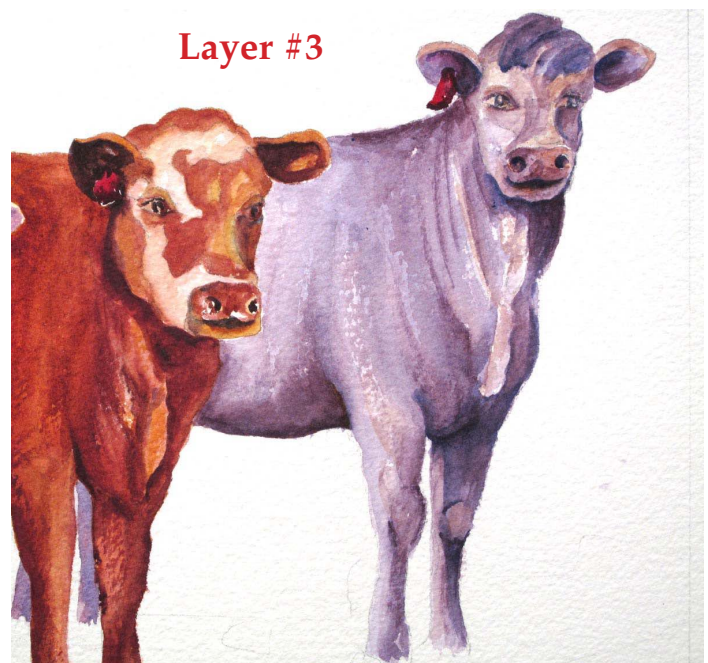
Paint Colors: for Layer #2

Reds: Perm. Rose Perylene Violet

Blues: Cobalt Blue, Ultramarine Blue

Layer #2. Increase the intensity of the colors, introducing some Perelene Violet and Ultramarine Blue in the darker areas.

Remember to paint in the two back legs.



Layer #3

Paint Colors: for Layer #3

Yellows: Raw Umber, Q. Gold

Reds: Perm. Rose, Perylene Violet

Blues: Cobalt Blue, Ultramarine Blue

Layer #3.

Add some raw umber and Q. gold for the light areas in the face and body. Strengthen the darks with Perylene Violet and Ultramarine Blue

The cow looked too blue-violet, so I added a light wash of perylene violet over some parts of the cow. Paint the ear tag.

Paint the Foreground

1. Begin on dry paper with a large Isabey brush loaded with yellow, brushing on the paint with the side of the brush and leaving some white areas.
2. Start with yellow at the left side and work across the 1st third of the paper left to right. Add perm rose, working across the second third of the paper, letting it mix with the yellow wherever the two colors meet. Finally put yellow down for the final third of the paper.
3. Add Cerulean over the yellow at the far left, Add cobalt over the perm rose, and add some cobalt and new gamboge over the yellow on the far right.
4. Add Perylene violet under the cows for the shadows.
5. Blend the cows' feet into the foreground, adding UMBLue and Perylene Violet where the hooves meet the grass.

